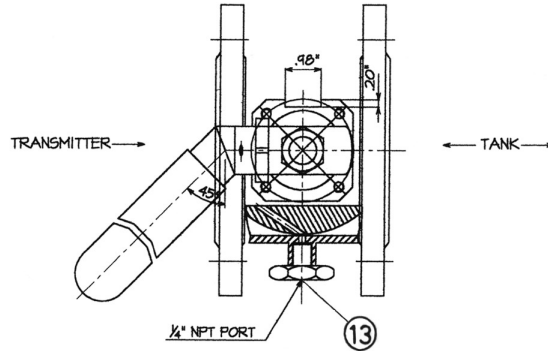
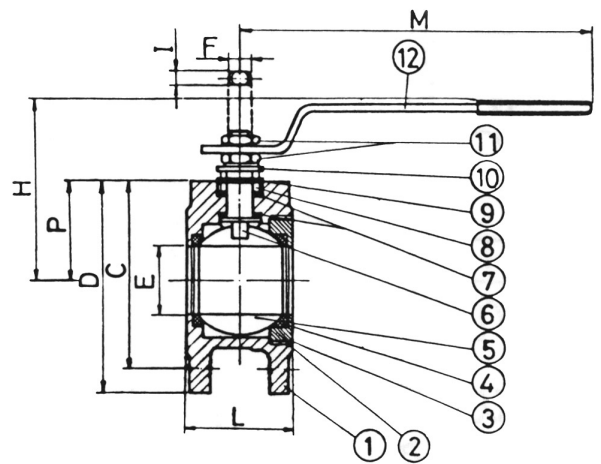


3" ANSI 150 Fig 305 TRANSMITTER ISOLATION BALL VALVE



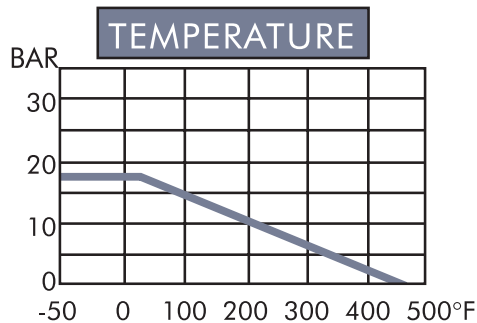
SPECIFICATIONS

- Face to face: ANSI B16.10
- Flange acc. to ANSI B16.5 150LBS and 26-28° Knife Gate offset (*Tank End*)
- 100% tested air under water 80 psi open and closed positions
- Hydrostatic test pressure: shell at 425 psi, seat at 300 psi



DIMENSIONS

MM	INCH	L	C	D	E	P	H	I	F	M
80	3	118	160	200	76	86	155	14	22	330



VALVE SIZE		FLOW COEFFICIENT		LIMITING STEM INPUT TORQUE	
MM	INCH	Cv	Kv	L3F IN	NM
80	3	350	303	3400	385
Cv FLOW-US GPM (PRESSURE-PSI)		Kv-FLOW-M/HR (PRESSURE-BAR)			

MATERIALS LIST

NO.	PART NAME	305B	305LT	QTY
1	BODY	SS316	317LSS	1
2	GASKET	PTFE	PTFE	1
3	RING NUT	SS316	317LSS	1
4	SEATS	RPTFE	RPTFE	2
5	BALL	SS316	Titanium GR5	1
6	STEM	SS316	Titanium GR5	1
7	GASKET	PTFE	PTFE	2
8	PRESSING BUSH	SS304	SS304	1
9	STOP	SS304	SS304	1
10	SPRING WASHERS	SS304	SS304	2
11	NUT	SS304	SS304	2
12	HANDLE	SS304	SS304	1
13	1/4" NPT PLUG	SS316	Titanium GR5	1